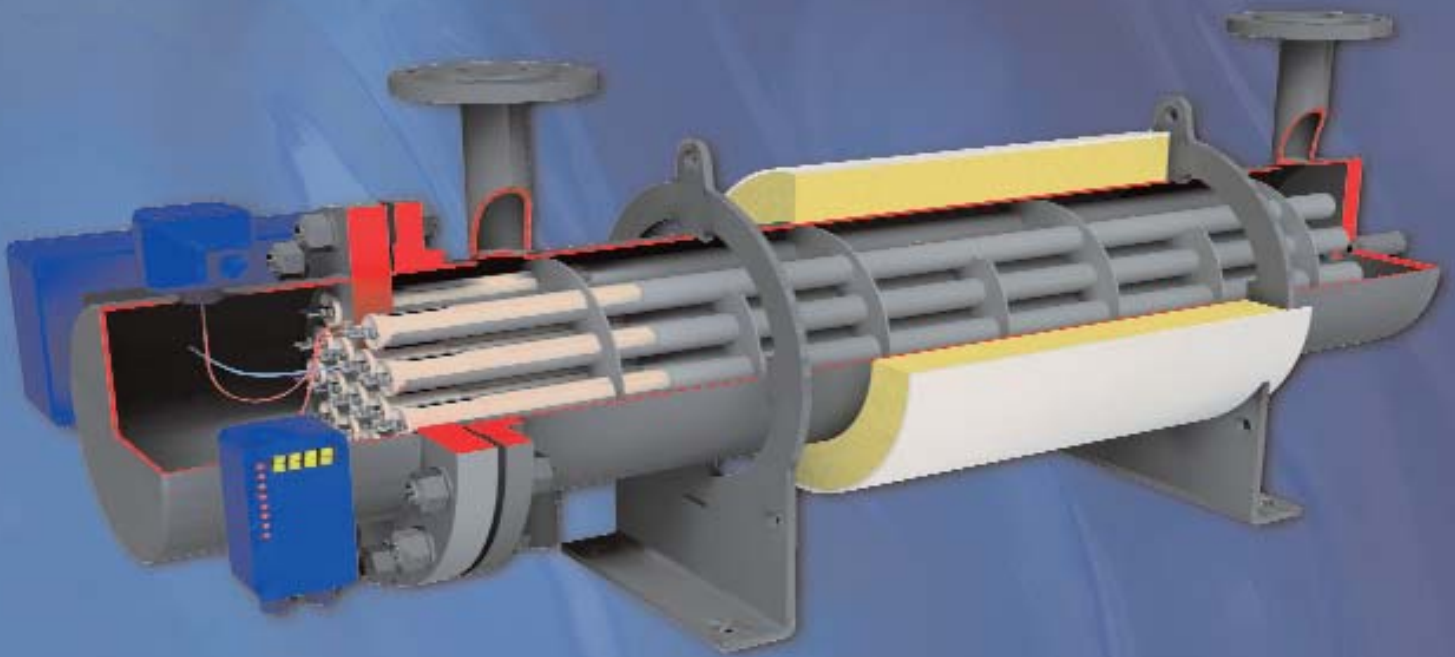


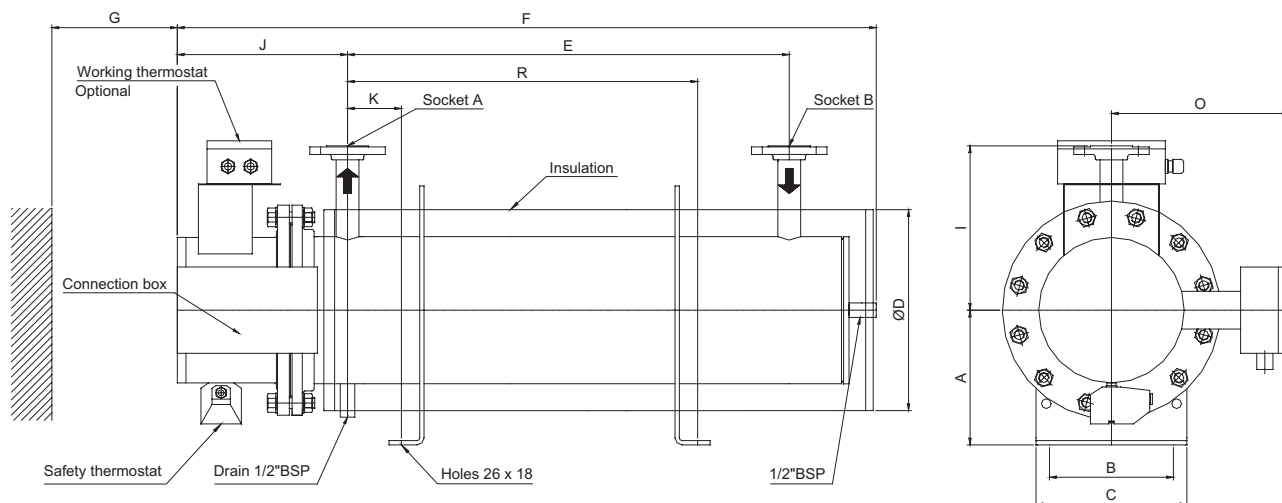


Versatile booster, auxiliary
oil and water heater

VESTA™ EH ELECTRICAL HEATER



VESTA™ EH is a flow-through electrical heater, ideal for heating of oil or water. Its heat load capacities range from 3 to 235 kW, with design conditions up to 16 bar and 160°C. The standard VESTA™ EH can be mounted both vertically and horizontally, but is also available as outflow suction heater or tank mounted immersion heater. The VESTA™ EH heater is approved by all major marine classification societies, and is CE marked.



Electric power supply terminals (110-690 V AC/DC), safety thermostat and the optional control thermostat are located on the top hood.

Design pressure: 16 bar (EH40-15 bar)
Design temperature: 160°C
Flanges: PN 16 DIN 86030/JIS-16K

Mounting style:
Vertically or horizontally
Dimensions in mm
Weights in kg

Accessories (optional):
Safety valve
Drain valve

Manometer
Thermometer
Pt. 100 sensor (optional)

Surface loads:
Lubrication oil 1 W/cm²
Heavy fuel oil 1.4 W/cm²
Water 3 W/cm²

STANDARD PRODUCT RANGE

Capacity and dimensions

TYPE	15			20			25				30					35					40					
Capacity kW	Lub. oil	5	7	8.5	12	14	17	21	23	26	29	33	37	40	45	48	51	59	63	74	78	96	100	111	116	121
	Fuel oil	7	10	12	17	20	24	30	33	36	40	47	52	56	63	68	72	83	88	104	110	135	141	156	164	171
	Water	15	21	26	36	42	51	64	70	77	85	101	111	120	135	146	154	178	188	223	235	See special data sheet				
Element length	600	850	1000	850	850	1000	850	850	1000	1000	850	1000	1000	1200	1200	1000	1200	1200	1500	1500	1500	1500	1800	1800	1800	
No. of elements	9			15	18	18	27	30	27	30	42	39	42	39	42	54	51	54	51	54	66	69	63	66	69	
A	170			250			250				250					300					300					
B	130			220			220				220					300					300					
C	300	430	580	430	430	580	430	430	580	580	430	580	580	780	780	580	780	780	1080	1080	1060	1060	1360	1360	1360	
D	270			325			380				425					460					510					
E	420	670	820	670	670	820	670	670	820	820	670	820	820	1020	1020	820	1020	1020	1320	1320	1300	1300	1600	1600	1600	
F	864	1114	1264	1174	1174	1324	1209	1209	1359	1359	1234	1384	1384	1584	1584	1407	1607	1607	1907	1907	1932	1932	2232	2232	2232	
G	580	820	980	820	820	980	820	820	980	980	820	980	980	1180	1180	980	1180	1180	1480	1480	1480	1480	1780	1780	1780	
H	253			280			307				333					350					375					
J	265	310	310	320			340				360					377					407					
K	170			180			200				220					237					267					
O	234			262			294				322					372					402					
Flange size, DN	32			32			40				50					50					65					
Net weight	55	65	71	102	109	112	137	140	163	166	206	225	228	254	258	294	327	331	381	386	486	495	555	560	565	

www.aalborg-industries.com

DATA SHEET series

© Aalborg Industries 2000, rev.: 3.1, January 2006 (Design data are subject to change without prior notice).

Your Preferred Partner